



# THE TIWI

NEWS for  
Traditional  
Owners



## NEWS from your LAND Council

### Topics

Chairman's Words	1
Port Melville Port Corp - Update	2-3
TPC and Mitsui sign MOU	4-5
History of Tiwi Forests	6
Manager's Notes	7
Quiz	7
Banana freckle disease	8-9
Leasing Land - Update	10
Mining at Lethbridge closure	11
Tiwi College - Respect	12
Member's Message	13
Tiwi Chef	14
Heart Foundation	14
Tiwi Bombers	15
Tiwi Ferry Timetable	16

### Good to know

Forestry already started on Melville Island in 1897 with a sawmill providing cypress pine for Darwin.



Old sawmill today on Melville island

## Chairman's Words



If you think things have been a bit wet, you are right. January rain last year was just 352mm. This January 2014 – a whopping 736mm! – More than double what we usually get. We are off to a good start with our other “Rainmakers” too. Tiwi Islands Adventures made the finals for the Australian National Tourism Awards last week; our Tiwi Plantations and Mitsui completed their historic agreement to commence the export of home grown chips from our plantations as we go to print; Captain Larry has some more exciting news of our Port developments in this edition:

Tiwi College and our other schools are off to a flying start with the same teachers welcoming more students for the year.

Finally the generations of our people who have worked for our strength to manage our land and to create our own resources upon these Islands that are now able to give us the jobs and an economy that is truly our own, can be believed. These are our own “Rainmakers” – who, like our leaders today, never gave up. Our traditions honour and respect their legacy to us. We thank all our Tiwi families for their strength and support for us to manage better the wellbeing of our people today.

*Gibson Farmer Illortaminni, Chairman Tiwi Land Council*



Celebrating with a joint traditional Tiwi-Japanese Ceremony at Wurrumiyanga R to L: Yasushi Takahashi, Chair and Managing Director of Mitsui & Co (Australia), TLC Chair Gibson Farmer Illortaminni and NT Chief Minister Adam Giles.

Photo by Kym Phillips

We Tiwi have a long held vision of developing a commercial economy which provides real jobs for our people and removes us from dependency on welfare.

# Port Melville Port Corp - Update



The marine works were completed by Marine and Civil 3 October. Hope you have had a chance to see it? Ezion is currently taking bids for construction of a 120 man Accommodation Village and a 20 million litre tank farm at Port Melville. There are 11 companies bidding on the Accommodation Village alone. We are planning to install an AQIS approved washdown facility ending our contract on Gorgon. To this end a number of plans are being developed for submission to the various state and federal agencies with oversight of such projects. Bids have been received for the site grading, excavation and drainage already. The plan is to commence construction as the wet season draws to an end.



Port Melville Marine Works



Teras Bandicoot arriving at Hudson Creek 23 November

The Indigenous training vessel Bandicoot arrived in Darwin 23 November. The vessel is moored at Hudson Creek while the works are in progress to get her into AMSA Survey and re-flag the vessel into Australia. Come have a look when you get a chance. We are in the process of applying for a bunker permit with Darwin Port Corp. This would allow the vessel to be used to fuel larger vessels like the dredges and cruise ships. Contractors and crews are working hard to get the vessel ready for AMSA inspections scheduled for the 28th.

The Base at Darwin has been renamed to Top End Marine Supply Base due to some silly nonsense. In any case this has all been cleared up. It is not an easy thing to develop a port. It takes a lot of time and effort by many people. We have made a lot of progress all in all and there are many to thank. Regretfully, it is impossible to thank everyone that has been involved, particularly amongst state and federal governments and the many consultants that have helped along the way. So as not to offend anyone that I might have missed, please accept our sincere gratitude to everyone has been a part of the project for your help and guidance. We wish to thank the team at Top End Marine Supply Base. They include: Ben Jonson, Samuel Brogan, Brenton Cardona, Lanne Sajulga, Lindsay Whiting, Peter Rioli, Andrew Warrior, John Rioli, Sherwin Sajulga, Dean Rioli, Shane Murphy and Jeremy Rioli.



The Bandicoot being inspected by Land Council Members escorted by members of the base team

# Port Melville Port Corp - Update



Top End Marine Supply Base

We have received tremendous help from Michael Long, Ben Halliwell, John Poynton, Clinton Wolf, Wayne Bergman and Sonya Liddle. Teras Australia staff that have played an integral role include Christine Solis, Peter Breuer, David Wong, Mike Milton CK Eng and Matt Stainton. Our colleagues in America at Teras America and Teras Cargo Transport led by Mr. Joe Sanders were responsible for preparing and shipping the pontoons. And of course none of this would be possible without the financial and moral support of Ezion led by my boss, our CEO Mr. TK Chew.

A special thanks to the Chief Minister, Mr. Adam Giles and his staff for their help as we work our way through the regulatory processes.

We commend Minister Giles for his vision, his leadership and his support. Thirty Aboriginal boys and girls have been trained to date by Aboriginal Marine Services at the Australian Maritime Institute in preparation of the Bandicoot crewing and the stevedoring work at Port Melville. Application has been made to the Commonwealth for funding to support our on-the-job training initiative aboard the Bandicoot. We are hopeful that we will receive a favourable response. Additional jobs will follow at the Accommodation Village and the Tank Farm as we introduce more vessels and as we expand our fleet in the region.

The push is on. It is exciting times. Finally and most of all, Ezion wishes to express our sincere thanks to the TIWI represented by Mr. John Hicks for welcoming us to share their land, for their patience and understanding and for their unfailing support of this important project, even in times of adversity.



Northern Territory Chief Minister Adam Giles

*Smooth Sailing, Captain Larry*

# Exporting Tiwi Woodchip



Mitsui Bussan Woodchip Oceania Pty. Ltd

**A historic day** on the Tiwi Islands - On the 10th of February our 100% Tiwi owned Tiwi Plantations Corporation signed a memorandum of understanding with Mitsui from Japan, who want to trade our woodchips.

Gibson Farmer Illortaminni has warmly thanked Plantation Management Partners for their tireless work and congratulated Tiwi Plantations Corporation and Mitsui on their historic agreement to commence the export of home grown plantation products from the Tiwi Islands.



Good speeches: L to R: G.F. Illortaminni, Chair TLC  
Yasushi Takahashi Chair/GM Mitsui & Co (Australia)  
Glenn Samsa, GM Plantation Management Partners  
Roger Smith, GM Tiwi Plantations Corporation

**“This is a day** that three generations of our people have believed in and worked for,” he said. “My own forestry apprenticeship began in the 1970’s. I continue this work with other Tiwi Foresters and with the outstanding management team we have attracted to work with us. This is a day we share in respect with leaders who have passed on. It is a day that belongs to Tiwi and others who have believed in our strength to manage our land and to create our own resources upon these Islands able to give us the jobs and an economy that is truly our own.”



Writing History - L to R: Cyril Kalippa; Gibson Farmer Illortaminni; Makoto Tatara, Mitsui; Yasushi Takahashi, Mitsui; Glenn Samsa, PMP; Walter Kerinaia Jnr.; Brian Tipungwuti; Craig Phillips, Director PMP



A good start for working together - L to R: Francis X. Kurrupuwu MLA; Makoto Tatara, Managing Director Mitsui Bussan Woodchip Oceania; Gibson F. Illortaminni, Chair TLC; NT Chief Minister Adam Giles; Yasushi Takahashi, Mitsui & Co (Australia); Cyril Kalippa, Director TPC

# Exporting Tiwi Woodchip



Mitsui Bussan Woodchip Oceania Pty. Ltd

**Gibson** also thanked the Chief Minister Adam Giles and the Northern Territory Government for their support and encouragement for his people. “Without a government that believes in the strength of aboriginal people, and supports those strengths for our own emerging economies, we would not be here with Mitsui today.”

“It is very important for us that the Chief Minister is here with us. It is a day we share as equals, able now to contribute through our own efforts, not only to the security and wellbeing of our own people, but to the wealth and vitality of the Northern Territory itself.”



Pedro Wonaeamirri presents his Tiwi message stick to the Japanese partners from Mitsui



The signing of the agreement between Tiwi and Mitsui was celebrated with traditional Tiwi-Japanese ceremonies. The company Mitsui has a long trading history going back 500 years. During a special ritual all agreeing parties paint one eye of a traditional Japanese doll. The second eye will be painted on the day the first load of Tiwi woodchip will leave the Islands. **Lots to do in the next months!**



# History of Tiwi Forests

Old sawmill Melville Island



- Forestry started on Melville Island in the late 1800s with a sawmill which provided cypress pine for export to Darwin. A small portable sawmill still operates periodically cutting timber for training and for sale to Darwin.

- The first forestry plantation started on Melville Island in December 1960.
- In 1968/69 the Northern Territory Administration started discussions with a major Japanese Trading House for the export of Tiwi woodchips from native forest.

- In 1986 when the Northern Territory Government ended its involvement in forestry on the islands, Tiwi decided to keep the plantations going themselves.
- 3900 ha of pine plantations had been established. More than 40 Tiwi were employed in the nursery and the plantations, as forestry workers, technical officers, plant operators, and truck drivers. Many had been employed for more than 10 years.

- In 1999/2000 Sylvatech received approval from the NT Government to plant 5200 ha of Acacia mangium.

- In 1999 the Australian Plantation Group and Tiwi Land Council received approval from the Commonwealth Government for a further 26,000 ha of hardwood plantations on Melville Island. At that time, this was the only forestry project in Australia to be assessed under the EPBC Act.

- By May 2009, Great Southern (Australian Plantation Group) was in the hands of the Receivers. The Great Southern/Sylvatech project was high cost and unsustainable.

- On 30th September 2009 the Receivers and Managers abandoned the Leases. Tiwi were devastated. Once more, Tiwi decided to take over the plantations and manage them to harvest.

- Tiwi Landowners established Tiwi Plantations Corporation Pty Ltd (TPC) in November 2009 to manage the plantations on behalf of the traditional landowners.

- TPC maintains the plantations to a high standard through its partner Plantation Management Partners (PMP), with ISO 14001 accreditation. The current plantation maintenance operation employs up to 34 people, half of whom are Tiwi.

- The Great Southern wharf collapsed in 2007. Tiwi negotiated an agreement with the Singaporean company Ezion to construct a port to allow for the export of woodchips. Construction of the new wharf at Port Melville was completed in October 2013. The new port has potential to service a wide range of customers across north Australia.

- TPC is finalising commercial investment to purchase equipment and allow harvesting, woodchipping and export operations to commence by May 2014. Tiwi families have committed a further \$1.5 million of their own funds to harvest.

- The Memorandum of Understanding to be signed with Mitsui is a major milestone for Tiwi. 46 years since discussions first started with a major Japanese Trading House for the export of Tiwi woodchips and 54 years since plantation forestry started on the islands, the Tiwi vision of a forestry industry providing jobs for their people and income for their communities is about to happen.

- The agreement with Mitsui will mean 80 to 100 jobs for Tiwi people, additional to the jobs that will be provided at the port. Between 200,000 and 400,000 green metric tonnes of Tiwi wood chip will be exported every year with an annual gross value of between \$30 to 40 million.

*by Roger Smith*

2000s



1980s



1960s



# Managers' Notes



Managers Tiwi Land Council

**Your TLC** Executive and Delegates would like to welcome our Tiwi family into an exciting 2014, the year of the Tiwi in bringing it all together for the benefit of all our people.

We would also like to send our condolences to family that have lost loved ones over the Christmas and New Year period.

The early months of 2014 will see construction of accommodation for 120 workers and land based infrastructure at Port Melville. It is our dream and the vision of our great leaders of the past, that most of these jobs are taken by Tiwi people.

April this year will see the first harvest of our Tiwi Forestry Project, creating 80 Tiwi jobs, finally seeing the rewards and fulfilment of a couple of decades of hard work and planning from your Land Council and Land Owners.

This year also sees some serious work being done on the whole of Island Tiwi Education Board so that we Tiwi can have more of a role in the education and the future of the Tiwi Islands - our kids.

The Tiwi Grand Final, Tiwi Ashes, real jobs in real Tiwi owned industries...hold on to your hats family, because 2014 is the year of the Tiwi!

**Remember to support your representatives on the Tiwi Land Council and share your ideas and issues so they can be addressed by the members.**

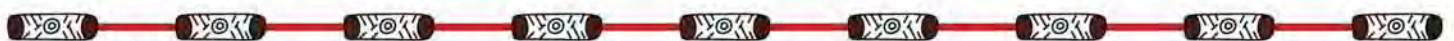
*Management Committee Tiwi Land Council*



## Quiz

1. How many Tiwi have completed their apprenticeships through TITEB in the last decade?  
a) 79 b) 167 c) 242
2. What is the name of the Company that has promised to buy our Wood Chips?  
a) Sumitomo b) Mitsui c) Ezion
3. How much money did our Fishing Lodges TIA pay to Landowners accounts last year?  
a) \$66,000 b) \$94,000 c) \$107,000
4. How many Tiwi between 15 and 34 are not interested in finding any work?  
a) 280 b) 430 c) 590
5. How many litres of Coca-Cola are consumed every six months at Wurrumiyanga?  
a) 10,00 litres b) 50,000 litres c) 100,000 litres
6. Who is the new Governor General of Australia?  
a) General Cosgrove b) Kevin Rudd  
c) Air Marshall Heuston
7. How much money has the Tiwi Land Council spent on Funerals and Ceremony since July last year?  
a) \$80,000 b) \$170,000 c) \$230,000
8. How many fishing tourists visited our TIA Fishing Lodges last year?  
a) 363 b) 421 c) 783

Quiz answers on page 15



# Banana freckle disease found at Milikapiti



Healthy delicious banana fruit with commercial value

**Banana freckle** is a disease that affects the leaves and fruit of banana plants. While it is not harmful to humans, it affects the commercial value of the fruit.

The disease was found in the NT for the first time in 2013, in banana plants near Darwin. In order to protect the banana industry, the NT and Australian Governments decided that the disease must be eradicated.

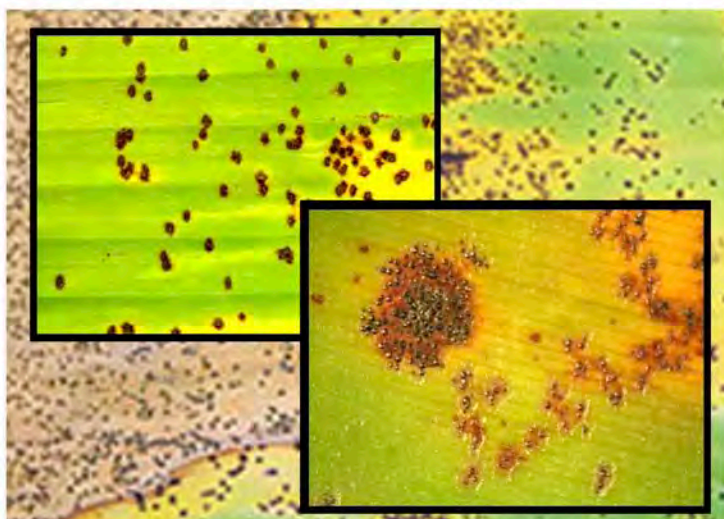
This can only be done by destroying all banana plants with the disease, and all other banana plants nearby.

**In January** Tiwi Rangers assisted NT Government Biosecurity Officers with surveys for Banana freckle disease across the Tiwi Islands.

Samples of banana plants were sent back to Darwin for microscopic analysis, and the disease was confirmed from two areas at Milikapiti.



Banana freckle disease symptoms on fruit and leaves





# Banana freckle disease found at Milikapiti



**In accordance** with the Plant Health Act, Milikapiti was declared a “Quarantine Place” for banana plants on 5th February.

**The area under quarantine** goes from Karslake in the north to Sabu Landing in the south, and from Shark Creek in the west to Timrambu in the east. This area is known as the “restricted area”, and is shown on the map.

## TIWI ISLANDS QUARANTINE



Banana freckle quarantine area at Milikapiti

The declaration of a “Quarantine Place” means that:

- Banana plants cannot be taken into or out of the restricted area
- Banana plants cannot be moved around within the restricted area
- Banana plants cannot be planted or propagated in the restricted area

We are now waiting for advice from the NT Government on what needs to be done with the banana plants at Milikapiti.



Tiwi Land Council

# Leasing Land



Landowners lease a lot of land in Australia. In fact 45% of all Australian land is leased out to people and corporations with money to use and develop land. Tiwi landowners today lease only 0.0625% of Tiwi land – Townships, Port Melville, Tiwi College and Matilda Mining. Investors need leases to invest on land that they cannot own.

Tiwi will always own their land.

Government has said they will help find investors for up to 10,000 hectares = 1% of Tiwi land, if any landowners are interested. Some are. Some are not. Interested landowners will have to talk with Government and develop their business plans. When they have done this they will need to discuss their plans with the Land Council and the Minister.

**THERE ARE NO BUSINESS PLANS AND NO LEASES SIGNED.**

Interested Landowners start meeting with Government from mid February on.



## Bush Holidays - Family Time



Nice one Linda! Gibbo prepares a meal caught by his wife.



Family add their own catch from the wild

# Mining at Lethbridge closure



MZI Resources, a mineral sands mining company, has successfully operated on the Tiwi Islands, Northern Territory since 2009. During that time it has mined the Lethbridge South and Lethbridge West deposits, both located on Melville Island.

All mining activities on the island have ceased with Lethbridge South now in a closure phase. The Company is currently negotiating the sale and removal of the remaining mining equipment and camp facilities at Lethbridge South which it expects to finalise in the coming month.

Rehabilitation activities at Lethbridge West and Lethbridge South remain ongoing and will be closely monitored over the coming years, in consultation with the TLC and in accordance with Government regulatory conditions. This work will continue to be undertaken with the assistance of Kate Hadden and the Milikapiti Nursery team.

The Company would like to acknowledge the work contribution

made by two local employees, Lawrence Rioli and Willie Clayton and we wish them all the best in their future endeavours.

A number of local businesses have been integral to the day to day operations of MZI and we would like to express our thanks to Brash Contracting, Topend Barge, Tiwi Barge, Morris Corporation and many other local businesses that have provided goods and services to MZI's operations over the years. MZI will continue to work closely with the Tiwi Land Council and traditional owners during the closure and exploration phases, and greatly appreciate the ongoing support extended by the TLC during the Company's presence on the island.

The Company remains committed to the Kilimiraka project on the Tiwi Islands and is currently progressing the environmental approvals with the NT Government.

The Kilimiraka approvals phase will run parallel to developing MZI's Keysbrook project in Western Australia, with the aim of recommencing exploration activities for Kilimiraka in 2015.

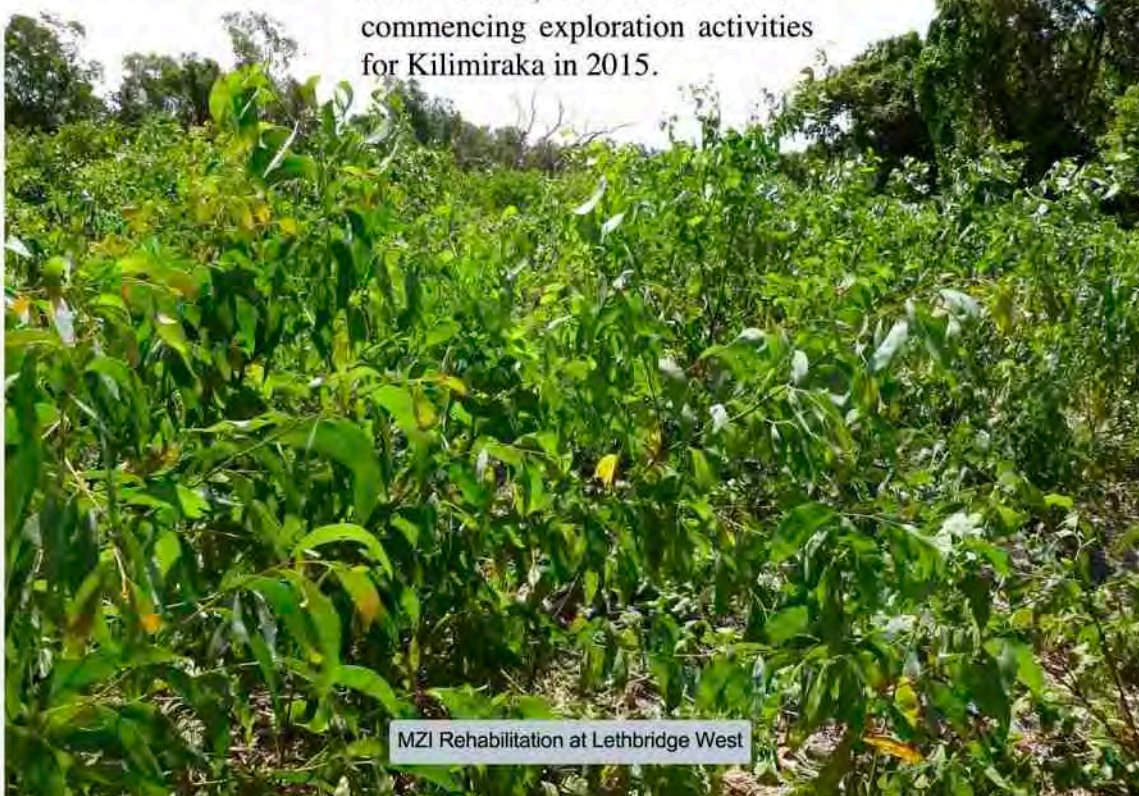


Concentrator Plant at Lethbridge South



Mineral Sands

As a proud corporate sponsor of the Tiwi Bombers, MZI would like to wish the Bombers every success going into the final rounds of the football season.



MZI Rehabilitation at Lethbridge West

# Tiwi College - Respect



## Awuna

2014 has begun extremely well, with our school nearly full for the first few weeks. We want as many young Tiwi coming to Tiwi College – run by Tiwi, for Tiwi.

Many of our staff have stayed on at Peaceful Picka from last year. All of our Academic Staff and Family Group Home Parents have stayed. Parents can feel relaxed knowing that their children are being well cared for by their "Picka Family".

We are very happy to welcome our new staff Neil Chippendale, our VET Coordinator; his wife Lindy Chippendale, our Librarian and Literacy Intervention Assistant; Rick Timmer our Operations Manager; his wife Pattie Timmer, our Office Manager and last but not least, Anne Broadbent, our Academic Coordinator. All of these new staff members have had previous experience in Indigenous communities and we are very excited to have them on board.

2014 promises to be one of our best – with an expanded VET program, a very strong literacy & numeracy focus and some fantastic initiatives.



Cecilina Mungatopi - TEB Student of the year 2013



Isadore Fernando - Graduate 2013  
Full employment as Assistant teacher



Vanessa Daniels - Graduate 2013  
Employed at Milikapiti Social Club, awaiting Tiwi Plantation work

SEDA – is an organisation that has partnered with Tiwi College to employ the Senior Boys as School Based Apprentices to run Sport, Health and Recreation programs around the island. The class will be PAID for their service and treated just like anyone in the workforce – for the benefit of others in Tiwi Communities.

Our AFLNT & Growing Young Women's programs have started well and there are plenty of chances for students of Tiwi College to participate in trips and carnivals throughout the year – if they attend regularly.

All senior students are now completing Stage 1 & 2 units – just like any other students around the state.

The difference at Tiwi College is that our students are taught to be "Work Ready" during school and when they are at their Family Group Homes - and we do this well!!

May 2014 be a happy one for you all.

Mana

*Ian Smith, Principal Tiwi College*

# Message from Member for Arafura



I would like to welcome everyone to 2014 and hope that each and every one of you had a safe and enjoyable Christmas and New Year, with family and friends. I am looking forward to working closely with the people of the Tiwi and the Tiwi Land Council once again this year. Throughout January I have been meeting with Ministers and discussing how we can better the Tiwi and bring more opportunities to the people. I am pleased to announce that these discussions have been positive and this year I believe we can get a lot achieved.

In mid-February I will have Parliamentary Sittings and will be unable to be on the Tiwi Islands, however I would love to meet with my constituents shortly after so you can talk to me about any issues you may have. During this time I will listen to any concerns regarding Northern Territory Government and Commonwealth Government matters.

If any of these concerns need to be addressed by the Territory or Commonwealth then I will make the necessary approaches and request the concerns raised with me, whatever they might be, are resolved to the satisfaction of my constituents. Keep an eye out for posters at nearby stores.

I am very excited to be attending the Tiwi Grand Final on March 16. It looks like a great day full of Tiwi culture, art and of course sport. It is always a pleasure to see people on the Islands excited and involved with these events. Finally if any person has an issue that they would like me to address and I am not on the Island then please email my electorate officer or give her a call; she loves hearing from you.




Francis Kurrupuwu and Tiwi at ceremony on 10th of February 2014 at Wurrumiyanga for the signing of memorandum of understanding between Tiwi Plantations Cooperation and Mitsui & Co (Australia) Ltd.




10th of February 2014 at Wurrumiyanga - celebration of signing MOU between Tiwi Plantations Cooperation and Japanese company Mitsui & Co (Australia) Ltd.

L to R: NT Chiefminister Adam Giles, TLC Chairman Gibson Illortaminni, Yasushi Takahashi - Chairman Mitsui & Co (Australia), Makoto Tatara - Managing Director Mitsui Bussan Woodchip Oceania, Dr. Gary Inions - Mitsui, Glenn Samsa - Managing Director Plantation Management Partners



### Contact details:



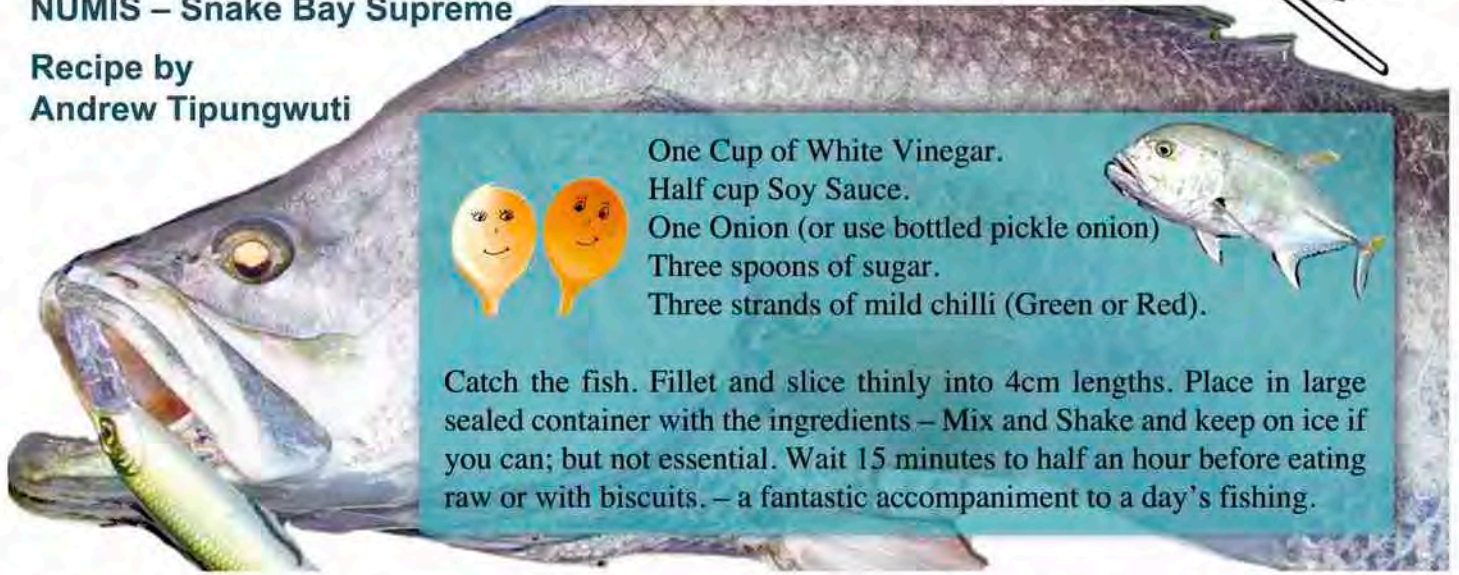
**Francis Kurrupuwu - Member for Arafura**  
**Phone: 8999 6950**  
**Email: [francis.kurrupuwu@nt.gov.au](mailto:francis.kurrupuwu@nt.gov.au)**  
**[electorate.arafura@nt.gov.au](mailto:electorate.arafura@nt.gov.au)**

# Tiwi Chef



## NUMIS – Snake Bay Supreme

Recipe by  
Andrew Tipungwuti



One Cup of White Vinegar.  
Half cup Soy Sauce.  
One Onion (or use bottled pickle onion)  
Three spoons of sugar.  
Three strands of mild chilli (Green or Red).



Catch the fish. Fillet and slice thinly into 4cm lengths. Place in large sealed container with the ingredients – Mix and Shake and keep on ice if you can; but not essential. Wait 15 minutes to half an hour before eating raw or with biscuits. – a fantastic accompaniment to a day's fishing.



# Heart Foundation



Happy New Year from the Heart Foundation  
What's new in 2014!

The Tiwi Bombers Football Club are going to star in some new Heart Foundation 'Smokefree' radio ads that will go to air in February. The ads will be played on TEABBA, and will be broadcast to 29 remote communities in the territory. Listen out for them.

You will also see some new health posters also starring local community members from each of the communities. The posters also have some great messages about health and being Smokefree.

Some more exciting news....The Heart Foundation in partnership with Tiwi Shire Sport and Rec will be hosting the Healthy Lifestyle Cup.

The Cup's message is "Kick Smoking and Kick a Goal", encouraging people to quit smoking, get active and live healthy.

How will it work...there will be female teams from Pirlangimpi, Milikapiti, Tiwi College and Wurrumiyanga playing in the 9-a-side AFL competition on Thursday afternoons.

If you are interested in being part of the action or helping out at the games, speak with a member of the Sport and Rec Team or check out the draw and come down to support your team.

The Heart Foundation would like to say a huge thankyou to the Tiwi Islands for supporting this campaign.



The crew hard at work recording the radio ads in Milikapiti



Big congratulations to the Tiwi Islands Regional Council in going 'smoke free' across all of their shire sites



Hoops for health at the Tiwi Islands Regional Council 'smoke free' launch

The Heart Foundation is looking for someone to join their team as a Healthy Lifestyle Worker or Tobacco Action Worker. If you're motivated and passionate about the health of your community and would like to work 2 days a week please contact Beth Woods at the Heart Foundation on 0428 443 150.

# Tiwi Bombers



Ross Tungatalum

Jerome Tipuamantimirri

Austin Wonaeamirri

The 2013/14 Toll Tiwi Bombers are finishing a tough season with many positives emerging for players, members and supporters.

The sponsorship commitment to the Club by major national and NT companies Toll and Real Estate Central along with many new businesses has spread the financial load for the Tiwi Community Club.

The Toll Tiwi Bombers have used a record 64 individual players including 24 new Tiwi Island based players. Many of those players are Under 21 auguring well for the Club's future.

The highlight for the Board and members is the young talent debuting this season with teenagers Jerome Tipuamantimirri (Wurrumiyanga) and Kevin Portaminni (Pirlangimpi) the only players from the 64 to have played every game in the current 2013/14.

Many young players have been given opportunity and shown fantastic improvement over the season including teenagers Adam Tipungwuti, Jack Munkara, Alex Puruntatameri, Chris Warlapinni, Gary Puruntatameri, Kenny Puruntatameri, Alistair Darcy, Jonus Babui and many others.

Co-Coaches Gregory Orsto and town based Cameron

Hotton have been determined to introduce new young players throughout the season. The approach coupled with a strong "no train-no play" policy may have been costly short-term but fantastic for the future of the Toll Tiwi Bombers.

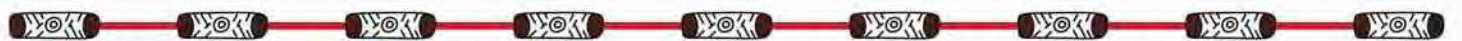
Three Toll Tiwi Bomber players have been selected by their Tiwi playing peers to represent the Club

in the final NTFL Most Valuable Player Award voting to be determined from a final 24 candidates by NTFL players from all clubs. Past Toll Tiwi Bomber winners have been Ross Tungatalum and Rupert Pupangamirri.

The Toll Tiwi Bomber players selected by their teammates are Vice-Captains Ross Tungatalum and Austin Wonaeamirri plus teenager Jerome Tipuamantimirri. A great effort by Jerome to earn the respect and confidence of his team-mates in his first season.

2012 Toll Tiwi Bombers Premiership Captain Shane Tipuamantimirri who is based at Tiwi College with his family has been nominated for the 2014 NT Sports Awards in the category of "Best Local Performance in 2013". The nomination comes on the back of his win in the prestigious 2013 NTFL Nichols Medal win for best player as determined by the NTFL umpires but underlining the joint nomination from the Toll Tiwi Bombers and AFLNT is Shane's ability to win the award from a remote location, a first in the nearly 70 year history of the award.

**The 2013/14 Toll Tiwi Bombers Champion Player Award will be announced at the Annual Presentation to be conducted in March at the Real Estate Central Oval. Details will be advertised.**



**OPENING HOURS**

Weekdays  
9.00am - 1.00pm  
2.00pm - 5.00pm

Saturdays  
9.00am - 12.30pm

**EVERY DAY FRESH**

PILYAMANYIRRA

## QUIZ ANSWERS from page 7

1. c) 242 Tiwi
2. b) Mitsui
3. c) \$107,000 paid to the landowners of the rivers fished
4. b) 430 people are not interested. 590 Tiwi people either have jobs or are looking for work.
5. c) over 100,000 litres; ANZ Journal of Public Health 2014
6. a) General Cosgrove
7. b) \$170,000 to end January 2014
8. c) 783 guests, who spent 2,648 days fishing and releasing back our fish.

# Find the word

Find the 20 words below in the grid.  
 The words can go forward, down or diagonally.  
 Some letters can be used for 2 words.  
 Draw a coloured line around each word as you find it.

L	J	E	T	T	P	E	X	L	
S	A	W	M	I	L	L	O	V	E
G	P	C	O	N	T	A	C	T	A
R	A	H	T	O	C	N	U	P	S
A	N	B	E	S	D	T	P	E	E
D	K	A	L	A	W	C	H	E	F
U	A	N	A	W	E	L	H	M	L
A	B	A	M	I	T	S	U	I	I
T	H	N	B	L	A	H	A	X	P
E	B	A	N	D	I	C	O	O	T

WOODCHIP	LAMB	CUP	LEASE
SAWMILL	LOVE	MIX	MOTEL
JAPAN	CHEF	JETTY	CONTACT
MITSUI	BANANA	FLIP	GRADUATE
BANDICOOT	WILD	LAW	PLANT

## Are you looking for

Vehicles for Hire?

Accommodation  
for Rent?

Lawn Mowing?



Contact Yvonne or Sharon on  
8941 1162 or visit  
[www.tiwienterprises.com](http://www.tiwienterprises.com)

## AGM Wulirankuwu



## Tiwi Ferry Weekly Timetable as of January 31st:

- **Thursday:** Depart Cullen Bay at 1230, Arrive Wurrumiyanga at 1500  
Depart Wurrumiyanga at 1530, Arrive Cullen Bay at 1800
- **Friday:** Depart Cullen Bay at 0730, Arrive Wurrumiyanga at 1000  
Depart Wurrumiyanga at 1530, Arrive Cullen Bay at 1800
- **Sunday:** Depart Cullen Bay at 1230, Arrive Wurrumiyanga at 1500  
Depart Wurrumiyanga at 1530, Arrive Cullen Bay at 1800